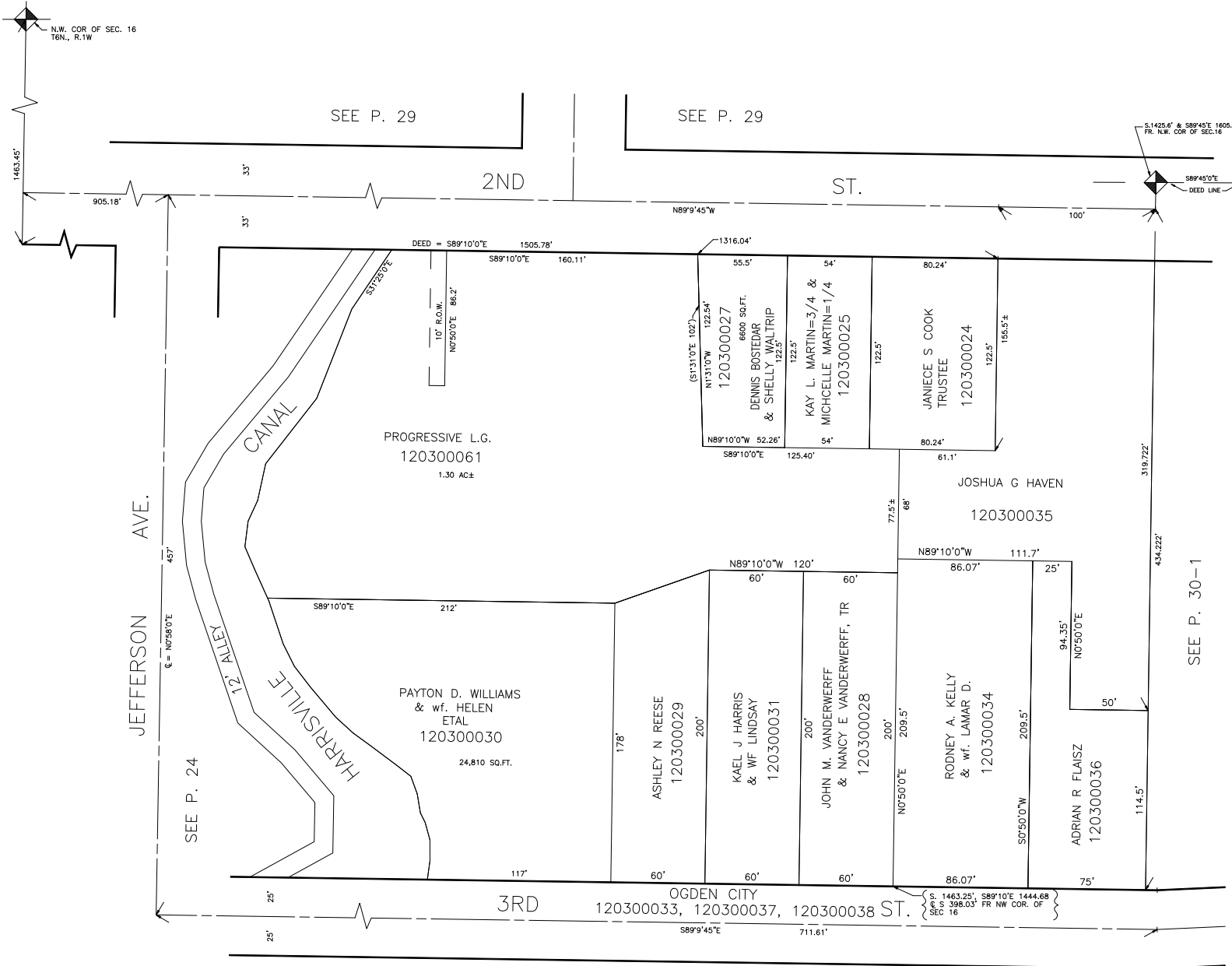


PART OF THE N.W. 1/4 OF SECTION 16, T.6N.,R.1W., S.L.B.&M

IN OGDEN CITY
SCALE 1" = 50'

TAXING UNIT: 25



JEFFERSON AVE.

SEE P. 24

SEE P. 29

SEE P. 29

2ND ST.

ST.

SEE P. 24

3RD

OGDEN CITY
120300033, 120300037, 120300038 ST.

SEE P. 30

SEE P. 30-1